

Potency Report

Report Issue Date: 4/18/2024
Analysis Date: 4/17/2024



Batch ID: 102125

Sample Description: Empe-USA 3001328 1-21221
Broad Spectrum CBD MCT Oil Tincture
5000mg/30mL FR# 20-9 FW: 31.4g TY:
3500g

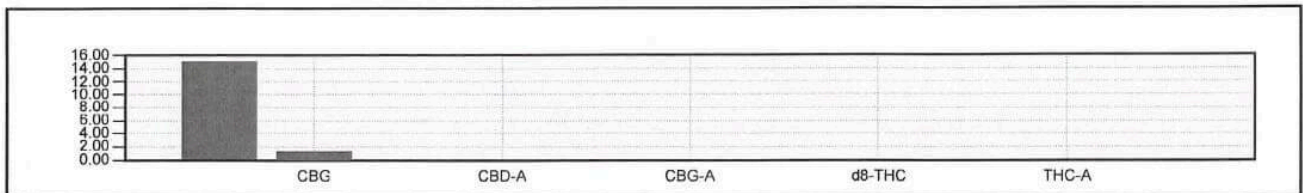
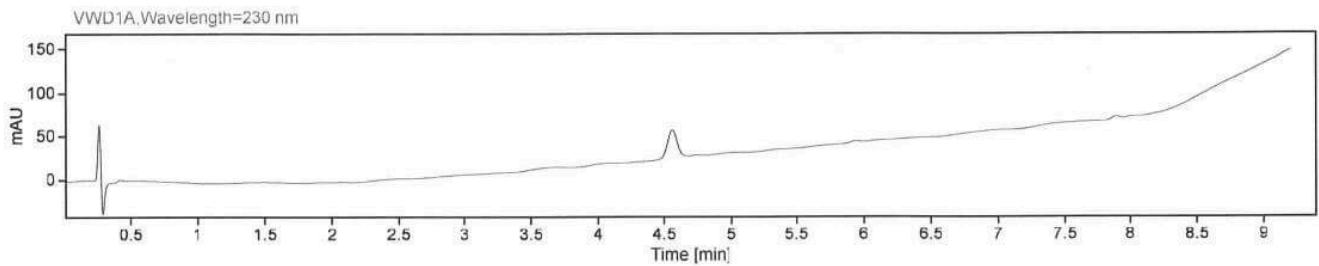
Name	Concentration [mg/g]	% Amount
d9-THC	0.0000	0.00
THC-A	0.0000	0.00
d8-THC	0.0000	0.00
CBD-A	0.0000	0.00
CBD-V	0.0000	0.00
CBG-A	0.0000	0.00
THC-V	0.0000	0.00
CBC	0.0521	0.01
CBN	0.0661	0.01
CBD	157.6422	15.76
CBG	13.2111	1.32

Total THC [mg/g]	Total THC [%]	Total CBD [mg/g]	Total CBD [%]
0.00	0.00	157.64	15.76

Comments:

**Total Cannabinoids: 170.97mg/g
5368.50mg/container**

**Total CBD: 157.64mg/g
4949.90mg/container**



* Cannabinoids with on-column values below LOQ will not be calculated into the "Total Cannabinoids" value.